

# Data Sheet for 4Way Valves



Technology in Polymer Valves

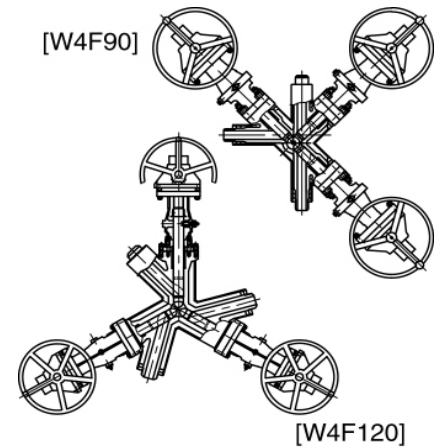
## Client Information

|           |  |     |  |
|-----------|--|-----|--|
| Company   |  |     |  |
| Attention |  |     |  |
| e-mail    |  |     |  |
| Phone     |  | Fax |  |
| Address   |  |     |  |

Please check at your selection or describe if there are no suitable selection.

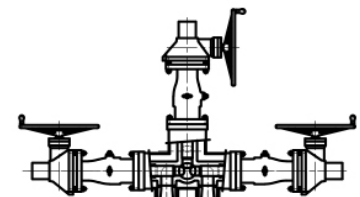
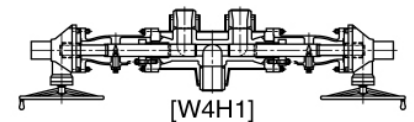
### 1. Valve Type

| Item                | Selection               | Check or Describe |  |
|---------------------|-------------------------|-------------------|--|
| Style               | W4F90 : 4Way Flat 90°   |                   |  |
|                     | W4F120 : 4Way Flat 120° |                   |  |
|                     | W4H1 : 4Way-H1          |                   |  |
|                     | W4H2 : 4Way-H2          |                   |  |
|                     | W4A-H : 4Way-A          |                   |  |
|                     | W4S : 4Way Solid        |                   |  |
|                     | Another special type    |                   |  |
| Jacket              | Jacketed                |                   |  |
|                     | Non-jacketed            |                   |  |
| Disc                | Disc&Stem               |                   |  |
|                     | Ram disc flat           |                   |  |
|                     | Ram disc round          |                   |  |
| Flushing valve      | With or Without         |                   |  |
| Use as Control vale | Yes or No               |                   |  |



### 2. Rating & Size

| Item              | Main valve | Flushing valve    |  |
|-------------------|------------|-------------------|--|
| Rating            |            |                   |  |
| Size(Core/Jacket) |            |                   |  |
| Connection        | Select     | Check or Describe |  |
|                   | Flange     |                   |  |
|                   | BW         |                   |  |
|                   | Grayloc(R) |                   |  |
|                   | Others     |                   |  |

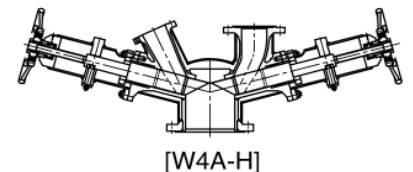


### 3. Design Condition

| Item               | Core | Jacket |
|--------------------|------|--------|
| Design pressure    |      |        |
| Design temperature |      |        |

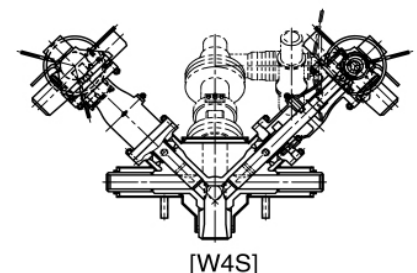
### 4. Materials

| Item       | Selection           | Check or Describe |  |
|------------|---------------------|-------------------|--|
| Valve Body | 304 Stainless steel |                   |  |
|            | 316 Stainless steel |                   |  |
|            | Carbon steel        |                   |  |
|            | Others              |                   |  |
| Coating    | Yes or No           |                   |  |



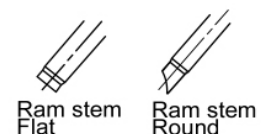
### 5. Operator

| Selection          | Check or Describe |  |
|--------------------|-------------------|--|
| Manual             |                   |  |
| Pneumatic cylinder |                   |  |
| Pneumatic motor    |                   |  |
| Electrical motor   |                   |  |
| Diaphragm          |                   |  |
| Others             |                   |  |



### 6. Utilities

| Item                | Describe |
|---------------------|----------|
| Supply air pressure |          |
| Voltage & Hz        |          |



### 7. Options, Spare parts, Other limitation etc.

|  |
|--|
|  |
|--|